

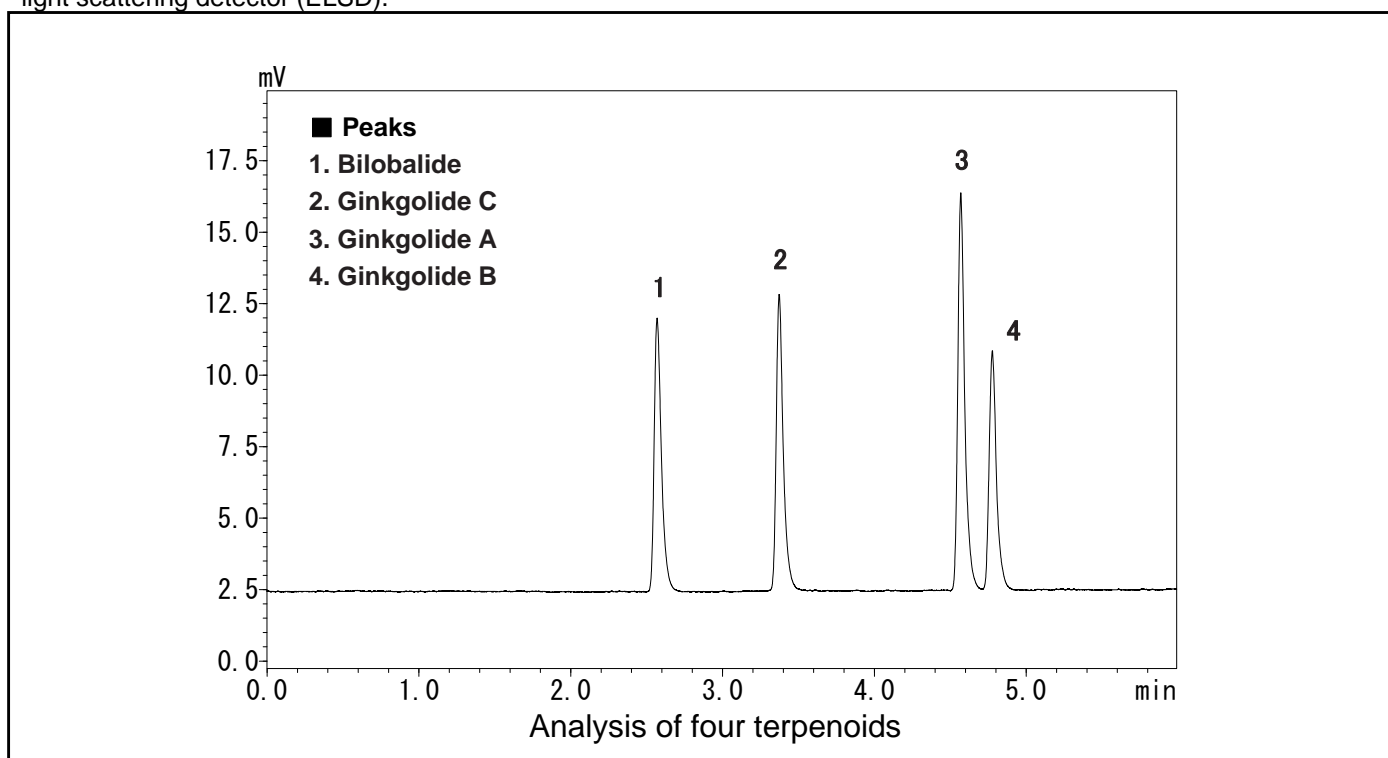
Application Data Sheet

High Performance Liquid Chromatography

No. 72

High-Speed Analysis of Terpenoids

Terpenoids, which are contained in large amounts in ginkgo biloba leaf, include bilobalide, ginkgolide A, ginkgolide B, and ginkgolide C. Here we present an example of high-speed analysis of the four components using an evaporative light scattering detector (ELSD).



[Sample Preparation]

The four terpenoids were dissolved in methanol to prepare a concentration of 200 mg/L each.

Analytical Conditions

Instrument	: Prominence UFLC system
Column	: Shim-pack XR-ODS (75 mm × 3.0 mm <i>i.d.</i>)
Mobile Phase	: A) Water B) Methanol B conc; 20 % (0 min) → 45 % (5.0 min) → 80 % (5.5 min) → 80 % (6.5 min) → 20 % (6.51 min) → 20 % (8.5 min)
Flow Rate	: 0.7 mL/min
Column Temperature	: 50 °C
Detection	: Evaporative Light Scattering Detector (ELSD)
Sample Volume	: 1 µL