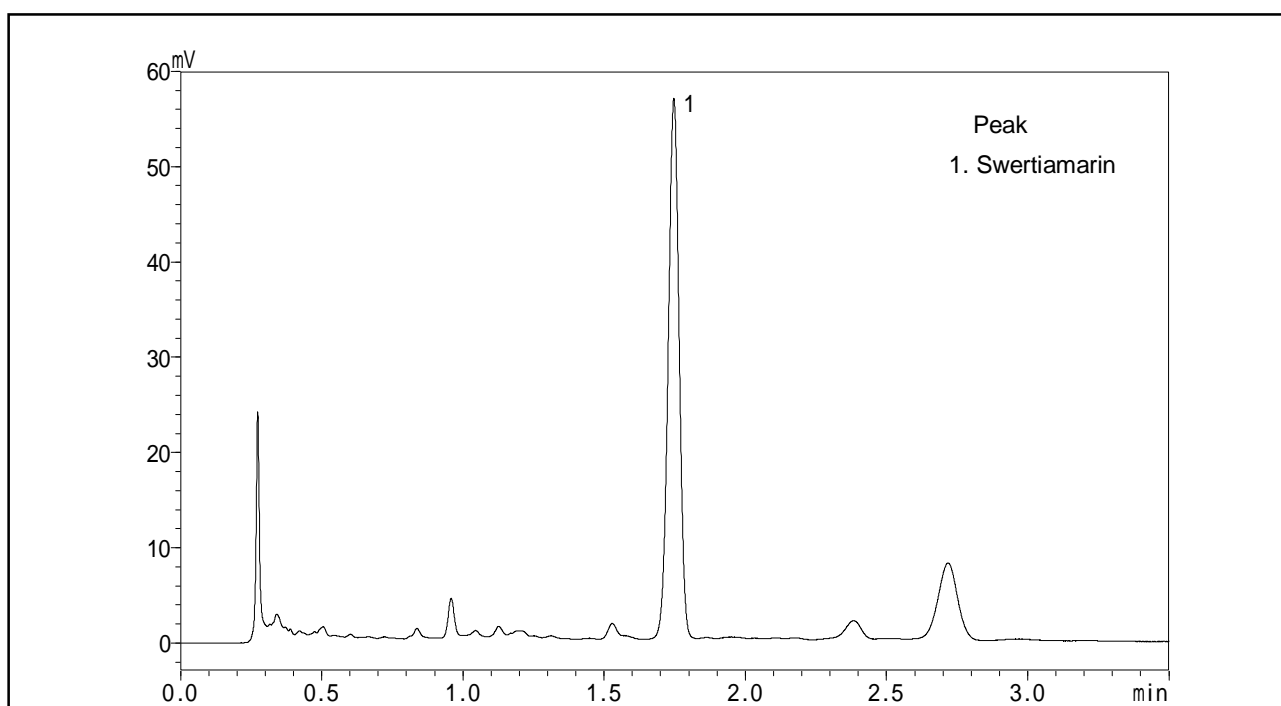


High-Speed Analysis of Swertiamarin

Here we conducted high-speed analysis of Swertiamarin, a bitter ingredient of the natural medicine Japanese green gentian (*Swertia japonica*).



Analysis of Swertiamarin in Japanese Green Gentian

[Sample Preparation]

10 mL of water was added to 0.1g of sample, and after extraction, the supernatant fluid was filtered through a 45 μ m filter.

Analytical Conditions

Instrument	: Prominence UFLC system
Column	: Shim-pack XR-ODS (75 mm \times 3.0 mm i.d.)
Mobile Phase	: Water / Acetonitrile = 91 / 9 (v/v)
Flow Rate	: 1.2 mL/min
Column Temperature	: 50 $^{\circ}$ C
Detection	: Absorbance at 238 nm with Semi-micro flow cell
Sample Volume	: 1 μ L