

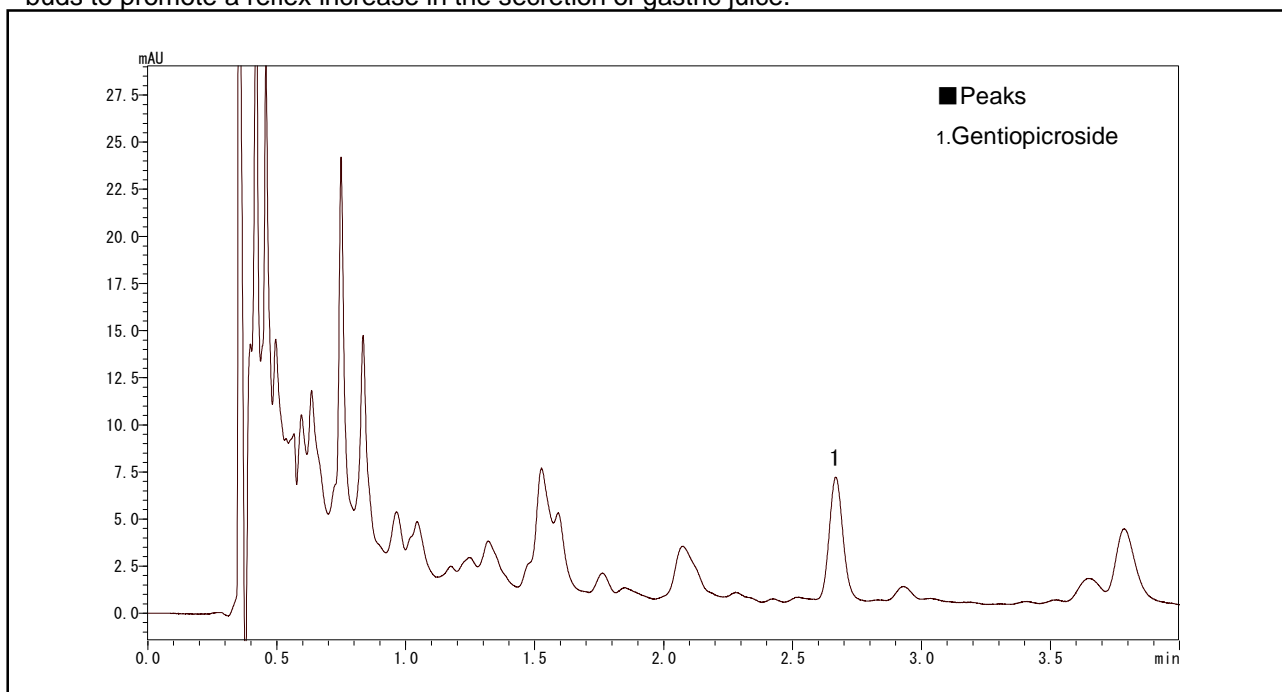
Application Data Sheet

High Performance Liquid Chromatography

No. 47

High Speed Analysis of Stomachic Medicine

An internal stomachic mixed with gentian extract was analyzed by the Prominence UFLCXR system. Some research has indicated that a bitter glycoside, gentiopicroside shows a stimulatory effect on taste buds to promote a reflex increase in the secretion of gastric juice.



Analysis of an internal stomachic mixed with gentian extract.

[Sample Preparation]

Sample was filtered through a 0.20 μm membrane.

* After 4 minutes elution, the column was washed to elute strongly retained matrices. The total cycle time including washing and equilibrating was 8 minutes.

Analytical Conditions

Instrument	: Prominence UFLCXR system
Column	: Shim-pack XR-ODS II (100 mm \times 3.0 mm <i>i.d.</i>)
Mobile Phase	: 0.05 % Phosphoric acid / Methanol = 4 / 1 (v/v)
Flow Rate	: 1.1 mL/min
Column Temperature	: 50 $^{\circ}\text{C}$
Detection	: Absorbance at 270 nm with semi-micro flow cell
Sample Volume	: 4 μL