

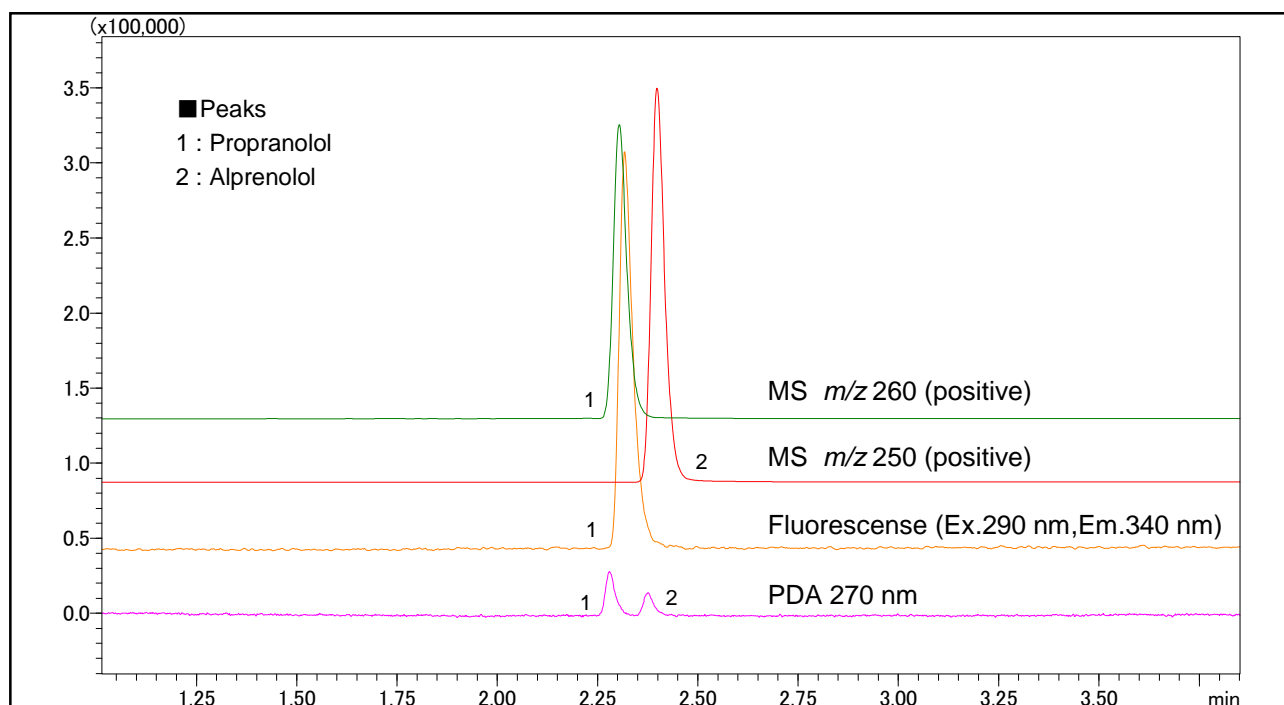
Application Data Sheet

High Performance Liquid Chromatography

No. 61

High Speed Analysis of Pharmaceutical Components Using LCMS-2020 (3)

This chromatogram shows separation results of propranolol and alprenolol by Prominence UFLCX^R. The eluate was split before the LCMS-2020 and RF-10AxL fluorescence detector.



Analysis of 2 Pharmaceutical Components

[Sample Preparation]

Created standard sample solutions of the 2 pharmaceutical components (each component: 5 $\mu\text{g/mL}$).

Analytical Conditions

Instrument	: Prominence UFLCX ^R system+LCMS-2020
Column	: Shim-pack XR-ODS II (150 mm \times 3.0 mm <i>i.d.</i>)
Mobile Phase	: A) 0.1% Formic acid - Water B) 0.1% Formic acid - Acetonitrile B conc. ; 20% to 35% (0 to 4.0 min)
Flow Rate	: 1.2 mL/min (PDA) \rightarrow 0.8 mL/min (RF) + 0.4 mL/min (MS)
Column Temperature	: 50 $^{\circ}\text{C}$
Detection	: MS; ESI-positive, Fluorescence; ex.290 nm, em.340 nm, PDA; 270 nm
Sample Volume	: 1 μL