

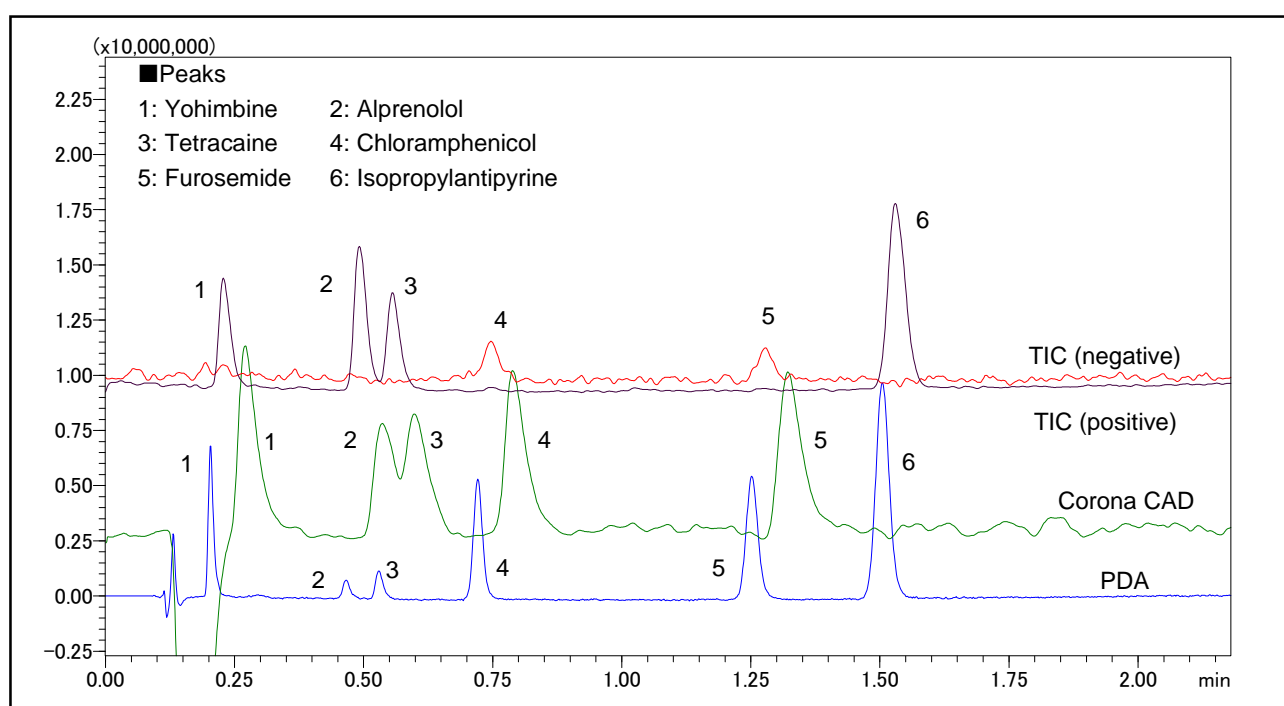
Application Data Sheet

High Performance Liquid Chromatography

No. 49

High Speed Analysis of Pharmaceutical Components Using LCMS-2020 (1)

This is an example of an analysis for pharmaceutical components by branching the eluate obtained from Prominence UFLC into a LCMS-2020 and Corona CAD*).



Analysis of 6 Pharmaceutical Components

[Sample Preparation]

Created standard sample solutions of the 6 pharmaceutical components respectively (each component: 15 µg/mL).

Analysis Conditions

Instrument	: Prominence UFLC system + LCMS-2020 + Corona CAD
Column	: Shim-pack XR-ODS (30 mm × 3.0 mm <i>i.d.</i>)
Mobile Phase	: A) 0.1% Formic acid B) Acetonitrile B.conc; 20% to 35% (0 to 2.0 min)
Flow Rate	: 1.5 mL/min (PDA) → 1.0 mL/min (Corona CAD) + 0.5 mL/min (MS)
Column Temperature	: 50 °C
Detection	: MS; ESI, PDA 260 nm (Semi-micro flow cell), Corona CAD
Sample Volume	: 1 µL

Note: Corona and CAD are trademarks and registered trademarks of ESA Biosciences, Inc. USA and in other countries.