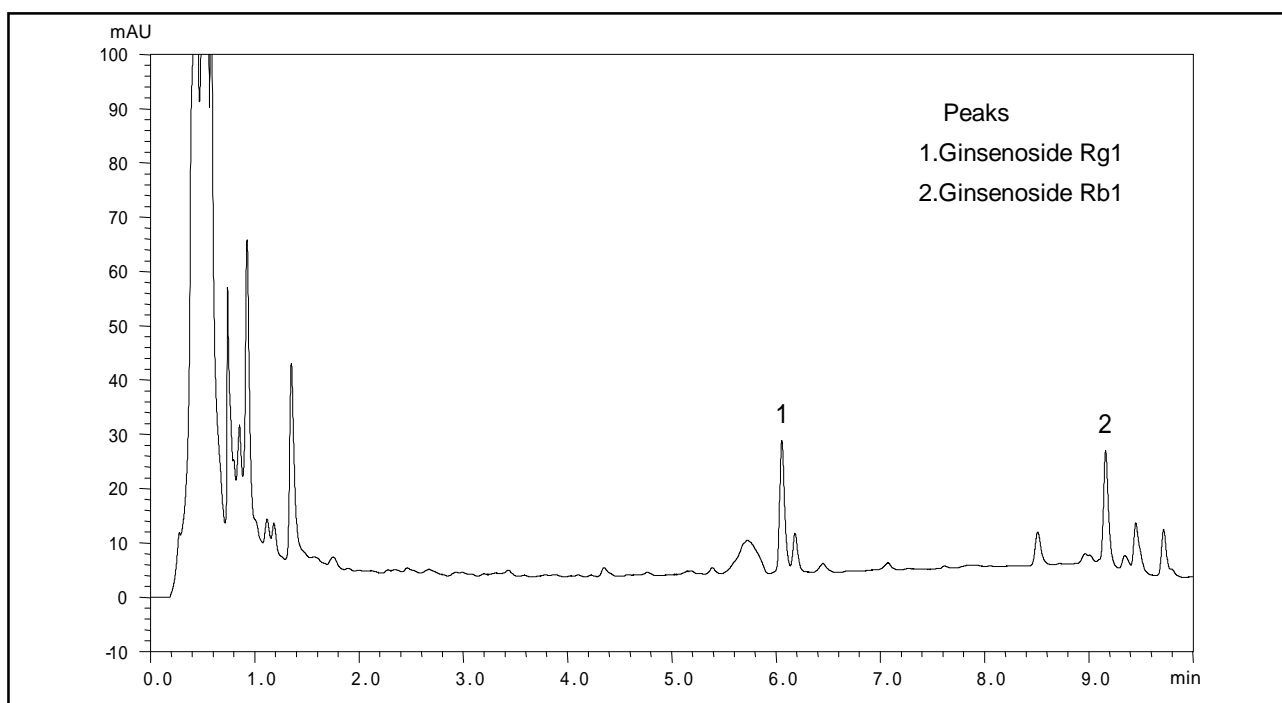


High-Speed Analysis of Ginsenosides

Red (Panax) ginseng, an herbal medicine with a nutritional fortification effect, contains the active ingredient ginsenoside. Here we used a high-speed analysis column optimized for the separation of highly polar compounds to analyze the types of ginsenosides contained in red (panax) ginseng.



Analysis of Types of Ginsenosides in Red (Panax) Ginseng

[Sample Preparation]

15 mL of 60% methanol was added to 1g of red ginseng powder, and after 20 minutes of ultrasonic extraction, then centrifuging, the supernatant fluid was filtered through a 0.45 μ m filter.

Analysis Conditions

Instrument	: Prominence UFLC system
Column	: Phenomenex Synergi 2.5 μ m Polar-RP 100 (100 mm \times 3.0 mm <i>i.d.</i>)
Mobile Phase	: A) Water B) Acetonitrile B.conc; 10 % ~ 35 % (0 ~ 10 min)
Flow Rate	: 1.0 mL/min
Column Temperature	: 40 -C
Detection	: Absorbance at 203 nm with Semi-micro flow cell
Sample Volume	: 4 μ L