

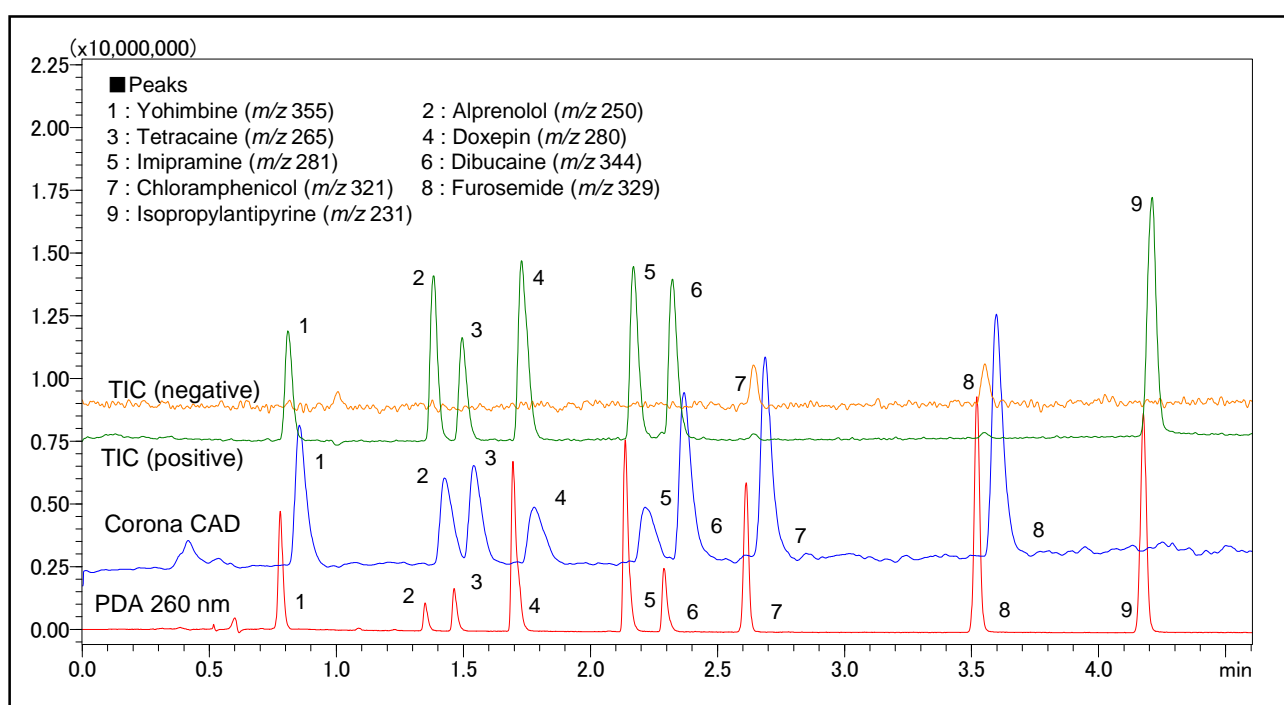
# Application Data Sheet

High Performance Liquid Chromatography

No. 60

## High Speed Analysis of Pharmaceutical Components Using LCMS-2020 (2)

These chromatograms show separation results of nine pharmaceutical components by Prominence UFLCXR with detection by LCMS-2020 and Corona CAD [Note]. The column eluate is split before the two detectors.



**Analysis of 9 Pharmaceutical Components**

[Sample Preparation]

Created standard sample solutions of the 9 pharmaceutical components (each component: 50 µg/mL).

### Analytical Conditions

Instrument	: Prominence UFLCXR system+Corona CAD+LCMS-2020
Column	: Shim-pack XR-ODS II (150 mm × 3.0 mm <i>i.d.</i> )
Mobile Phase	: A) 0.1% Formic acid - Water / Acetonitrile = 95/5 B) 0.1% formic acid - Acetonitrile B conc. ; 20% to 65% (0 to 5.0 min)
Flow Rate	: 1.3 mL/min (PDA) → 0.9 mL/min (Corona CAD) + 0.4 mL/min (MS)
Column Temperature	: 50°C
Detection	: MS; ESI, PDA 260 nm, Corona CAD
Sample Volume	: 1 µL

Note: Corona and CAD are trademarks and registered trademarks of ESA Biosciences, Inc. USA and in other countries.